

## **Rural Women upliftment (RUWA) Association**

### **Introduction**

| Association for Rural Women upliftment (RUWA) was registered as non – governmental organization at Sarlahi district Administration office in 2050 (1993). RWUA have been priority with the aim of supporting women, dalit, and indiginious people, poor and disable children in rural areas. Over the years, RWUA has established itself as a gender resource organization (GRO) as a pioneer organization, the organization emphasized on proactively campaigning against violence against women as well as Right base approach for an organization sees holistic development of marginal communities as the key feature to improve the livelihoods. RWUA also believes that equal participation of men and women in identification and mobilization of local and external resources that will provide sustainable way out of alleviating poverty in the rural areas, especially, maintaining good governance and transparency.

### **VISION**

The main vision of this organization is the elimination of poverty and creates effectively awareness among the poverty stricken and the down trodden communities to establish a sustainable development to bring about self -sufficiency and fulfill the basic necessitates which ultimately create a legitimate society, especially through marginalized people, dalits, Janjati, women and disabled citizen.

### **5. MISSION**

- To act or role-play for the empowerment and basic needs as well rights of the backward community by enlightening as well strengthening their organizational level by right base approach and methods.
- To act as a facilitator by implementing community based process or methods to enable the poverty elimination as well as livelihood recovery for their community people through contemporary entrepreneurship way and to progress by self-learning and experience.

### **GOAL**

To establishing itself as a lead gender receptive as well right base oriented advocate and sustainable community development organization, RWUA hopes to contribute or involvement to the holistic development for women, dalit, indigenous peoples disabled and children those who are believing locality and living in the rural, remote and backward areas in Nepal.

## **OBJECTIVES**

- Mining full vital Role play to reduce or minimize the Gender based violence and discrimination against women as a gender resource organization.
- To in lighting and empowering women as well deprive cast through social mobilization as well transformation process.
- To improve agricultural practices through organic as well endogenous farming
- To sensitize and aware to community people about importance of education and health for women children and disabled peoples.
- To reduce social norms and dignity against discrimination to marginalized dalits disabled and children at community level.
- To increase the disaster resilience and sensitive communities to save coming natural calamity or disaster.
- To improve general and reproductive health for put up healthy and wealthy community people.
- To improve livelihoods Prospective through socio-economic programs especially as income generating activities in different target community.
- To enhance as well increasing Institutional role through the establish linkages and network at local and national Level.
- To continue and enhancing social and development activities in a sustainable manner, which is already focusing on community peoples.

## **VALUES AND PRINCIPLES**

RWUA believes that peace and development is the key feature to the holistic and sustainable development of the community as well contemporary society. Therefore RWUA is committed respecting the equal rights of the between gender, children and disabled people ensuring equal participation of social activities. To establish rightful as well quality base social justice in society, RWUA considers that it is necessary to remain neutral, transparent and activeness in all activities and practice and gender sensitive behavior.

- To respect the individual identity of man & women, children, disable people, caste & ethnic minorities of the multicultural societies.
- To believe in organizational transparency such as implementing and plane way activities.
- To emphasis or high priorities of neutrality, politically and socially fairness and independency.
- To Offering or welcoming Gender sensitiveness, equity as well equal opportunity.
- To emphasis equal participation of plan formulation, Implementation and M and E for all sectors of development.
- Believe in Social Justice. Transformation, knowledge and skill empowerment, Local employment as well entrepreneurship.
- Believe in peace, development, Local resource, Community value and Prolong sustainability.

## **Target Groups**

Community Women, dalit, and indigenous people, poor and disabled, minor are the major target groups of RWUAs activities.

### **Thematic Working areas:**

RWUA thematic areas include as follows:

- General and Reproductive health
- Social/Community mobilization
- Indigenous and Sustainable agriculture
- Poverty alleviation/Minimization
- Local/Village development
- Disabled inclusion and peace building
- Child, dalit education and gender equality
- Reduction of gender based violence and empowerment
- Good Governance and Transparency
- Capacity building/ empowering
- Knowledge and skill enhancement/enlightening

### **Service provided by RWUA**

RWUA has proven experience of working successfully in the following areas:

- Gender: women rights, campaigns against violence against women, gender sensitivity.
- Child/disables care as well related service
- Social / community mobilization
- Decentralization/Community Development
- Institutional / Organizational Development
- Indigenous/Sustainable agriculture
- Disaster Management and rehabilitation of displaced from river cuttings issues.
- Health clinic, reproductive health, HIV AIDS, Malnutrition and uterus prolapsed.

### **Strategies:**

- Formation of inclusive community groups including maximum number of women.
- Prioritize dalit, ethnic & indigenous and disable people to involve in the program.
- Regular monitoring of proper distribution and equal access of project benefits to each and every one.
- Priority to exercise local knowledge, skills, resources as well as people's participation.
- Establish linkage among local targeted groups with government and non-government organizations.
- Reward women, elderly aged or ageing and staffs who are actively involve for the success in social reformation and development activities.

### **Working strategies with the communities:**

- Community Selection process (CSP) or button to approach.
- Identify and Collect community problems through using PRA tools.
- Analyze the Problems through PRA tools and make planning.
- Finding out of the root causes of the problems and re planning.
- Prioritize the problems and select issues.
- Identify alternatives solution for the problem.
- Participatory Planning and M & E as well.
- Formulate implementation strategy with specific indicators.
- Action Implementation with given format.
- Monitoring and Verification of outcomes and Reviewing.
- Reporting, Recording, public sizing, dissemination, documentation and Public Auditing.

### **Major Arena /achievements**

- More than 250 women community groups are actively involved in different 10 VDCs of Sarlahi district under Social Mobilization & Women Empowerment on Social Reformation Programs in 2058 – 2061 on "Gender Skill Development Project" supported by Canadian partner INGO (CCGRO). RWUA also implemented the second phase of the same project and became landmark for RWUA and communities on gender sensitivity, women empowerment and establish network in local and global arena. RWUA has learned a lot and became able to establish itself as Gender Resource Organization (GRO). For excellent organization for promoting women rights and contributing woman empowerment activities, such as pioneer action for RWUA was awarded by Ministry of Women Children and Social welfare Nepal government in 2062 BS.
- RWUA has involved in disability support program prioritized to disabled as an active player in every program. RWUA implemented 2 different programs of Handicap International Nepal in 2060 B.S "Disabled Support and Rehabilitation Program" and "Disability Inclusion Project" for more then 4 years; providing PRT service, support for inclusive education, social and economic empowerment, rehabilitation and than refers to disabled centered awareness program for special services, support them for getting ID card and building capacity for getting citizenship and RWUA has been advocate for mainstreaming disability for their rights and responsibility.
- RWUA has implementing as Poverty alleviation (PAF) Program, funded by Poverty alleviation fund of under supervision through government. This program especially, targeted on community poor's and deprived peoples for propose of poverty alleviation at local level. RWUA also been facilitating Local Government and Community Development Program (LGCDP) supported by district Development Fund to under supervision of ministry of Local development. This program targeted on village community for enhancing good governance and sustainable development by the local peoples it means bottom to approach.
- RWUA has been implemented Livelihood Recovery for Peace program, supported by LRP/UNDP in the arena of community women, dalit, janjati and poorest as well deprived citizen. Especially, focus on income generating activities through the people, for the society in there selected community groups for propose of poverty reduction. Communities groups focus on those activities as Vegetable farming, cattle/animal rearing, handicrafts, entrepreneurships and micro

enterprise. These activities were easily got handsome income and support livelihood prospective their community peoples in day long night.

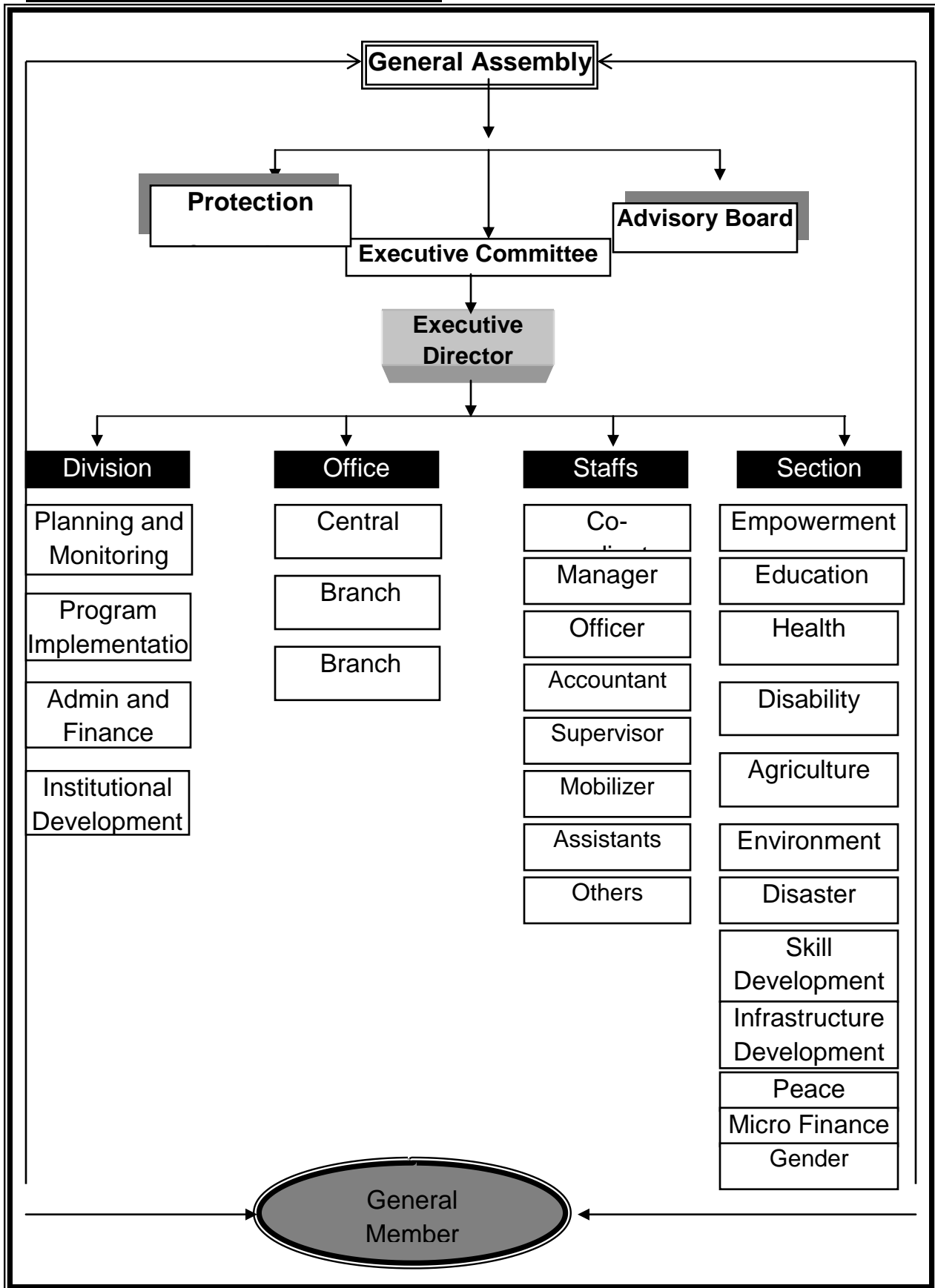
- RWUA organizes awareness raising as well community sensible programs on the issues of Women, Children, Disabled, Deprive Caste and Gender Discrimination, Health & Sanitation, Disaster Risk Reduction, Violence against Women, Superstitions like witch, dowry system and other cross cutting issues such as human trafficking and HIV/AIDS.
- RWUA believes in cooperative and collaborative effort of social networking for better success of any development project. Since the establishment, it has been developing its relationship with different communities as well groups, government and non-government organizations. It has excellent network with SWC, Ministry of Women, Children and Social Welfare, Education and export and with various INGOs as well as different national agencies. RWUA has collaborative partnership with 4 local NGOs for effective project implementation in the district.
- RWUA has established a Saving Credit and Cooperatives in 2058 B.S. for the mobilization of local economy for sustainable development programs. More than 530 members are involved in saving and credit scheme with total saving of NRS 1, 50, 00,000.00. To support the reproductive health and Disaster relief Support, RWUA has established fund of NRS 9,20,000.00 and 4,82,000.00 respectively. It has carry on 3 health clinics in different villages which provides health facilities regularly. It has own disable friendly office building with 12 rooms, 2 training halls, guest rooms, resource center for Disaster Risk Reduction, public library and adequate official equipments.

#### **Linkages Different International agencies and working experiences**

RWUA considers establishment of linkages different international agencies and network is being fundamental for sustainable and holistic development. Therefore RWUA has been established rapport building as well working relationship with the following organizations:

- District Development Committee
- Local Development fund
- District Education Office
- South Asia Partnership
- CCGRO
- CNGO
- World Neighbors
- Handicap International
- Poverty Alleviation Fund
- OXFAM GB
- UNDP/LRP/ IGA
- Safer Migration
- District Women and children office

## 7. ORGANOGRAM OF THE ORGANIZATION



Rural Women Upliftment (RWUA) Association

District: Sarlahi, Haripur VDC ward # 9

Phone: 046 620164, 9854035079

Email: [rwuaharipur@yahoo.com](mailto:rwuaharipur@yahoo.com)